



# TF-75H

HIGH LEVEL FEEDER



## SPECIFICATION:

Conveyor Length:		<b>22.5m (73' 10")</b>
Belt Width:		1.2m (48")
Net Engine Power:	Tier 3:	CAT 4.4 - 83kW (111hp)
	Tier 4F:	CAT 4.4 - 82kW (110hp)
	Stage V:	CAT 3.6 - 82kW (110hp)
Discharge height:		9.8m (32' 2") @ 24°
Weight:		23,500kg (51,809lbs)

STRONG **HERITAGE**, STRONG **FUTURE**

 **FINLAY**<sup>®</sup>  
A TEREX BRAND



# TF-75H

## HIGH LEVEL FEEDER

### FEED CONVEYOR

Belt Width	1200 mm (48")
Belt Type	Plain
Belt Spec	EP 400/3 4+2
Variable Speed (Y/N)	Yes

### DISCHARGE CONVEYOR

Width	1200mm (48")
Belt Centres	22.5m (73' 10")
Belt Type (Plain/Chevron)	Plain
Belt Spec	EP400 3 4+2
Drive Drum Diameter	345mm (13.5")
Tail Drum Diameter	320mm (12.6")
Max Belt Speed of Conveyor	113MPM
Motor Size & type	630CC
Operating Angle	5 - 24°

### HOPPER

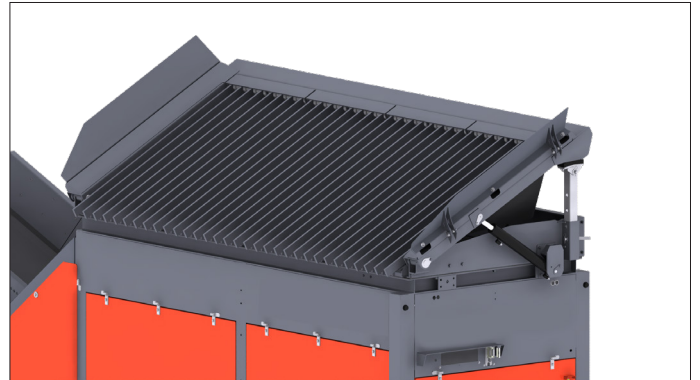
Grid Opening	4750mm (15' 7") x 2150mm (7' 1")
Target Area (without Grid)	4100mm (13' 5") x 1633mm (5' 5")
Grid Aperture	4" (108mm)
Optional Apertures	73mm (3"), 126mm (5") & 151mm (6")
Capacity (Tipping grid fitted) / Standard For LL	7m <sup>3</sup> (9.15 Cu. Yd.)
Capacity (No tipping grid fitted)	6.4 m <sup>3</sup> (8.4yd <sup>3</sup> .)
Feed in height rear without grid / Feed In Height For LL	2.6m ( 8'6")
Feed in height with Tipping grid	3.2m (10'6")

### VIBRATING GRID

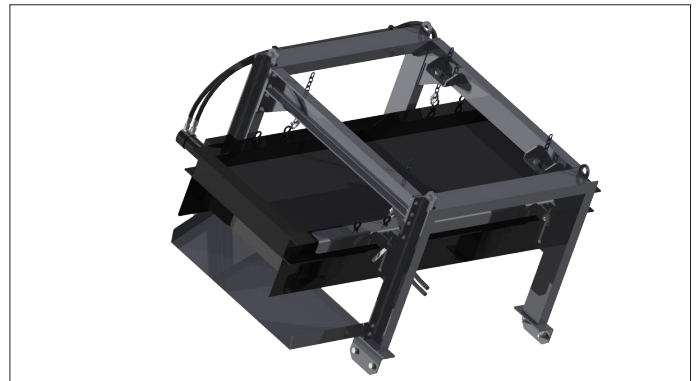
Type of Grid	"3.1m x 2.45m (10'2" x 8")
2 Deck Vibrating Grid"	
Target Area	3.91M x 2.42M (12' 9" x 7'11")
Grid Opening	3.03M x 2.17M (9'11" x 7' 1" )
Top Deck Type	Tapered Bofur Bar
Standard Aperture	90mm tapering to 110mm (4" )
Optional Apertures	110-130mm (5")
Bottom Deck Type	Woven Steel Mesh
Standard Mesh Aperture	38mm
Working Angle	10°-20°
Tip Angle	45°
Feed in height rear with grid :	3800mm (12'5") @ 10° -
4150mm (13'7") @20°	
Weight (kg)	5500 kg
Speed (rpm)	1050
Throw (mm)	4.5
G Force (ms-2)	2.77
Increase in Transport Height	+135mm (5.5")



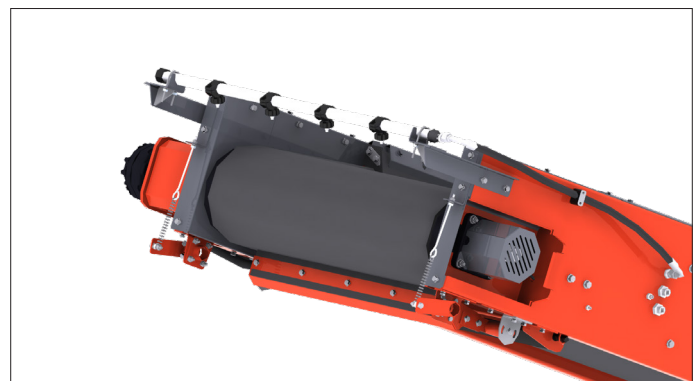
Adjustable Jacking Legs



Tipping Grid



Overband Magnet



Dust Suppression

		Stockpile Capacity @ 37° Angle of Repose
Conveyor Angle (°)	Discharge Height	Conical
18°	8m (26' 3")	944m <sup>3</sup> (1235yd <sup>3</sup> )
19°	8.1m (26' 7")	980m <sup>3</sup> ( 1282yd <sup>3</sup> )
20°	8.35m (27' 5")	1074m <sup>3</sup> (1404yd <sup>3</sup> )
21°	8.65m (28' 5")	1194m <sup>3</sup> (1910yd <sup>3</sup> )
22°	9m (29' 6")	1344m <sup>3</sup> (1758yd <sup>3</sup> )
23°	9.3m (30' 6")	1483m <sup>3</sup> (1940yd <sup>3</sup> )
24°	9.8m (32' 2")	1735m <sup>3</sup> (2270yd <sup>3</sup> )

## TANK CAPACITIES

Diesel Tank Capacity	325 L
Hydraulic Tank Capacity (T3)	360L
Hydraulic Tank Capacity (T4)	360L

## TRACKS

Shoe Width (mm)	400mm (1' 4")
Sprocket Centre (mm)	4300mm (14' 1")
Outer Width (mm)	2750mm (9')
Gradability (°)	45.9
Speed (KM/H) (Low)	0.6
Speed (KM/H) (High) / Or Single Speed	1.1
Track Flow (LPM @ 95% eff)	68LPM (per track)

## ENGINE

### T3 Engine

Engine Type and Power Rating	CAT 4.4 - 83kW (111hp)
RPM	1800rpm
Crankshaft Pump	Triple pump 38/38/8
PTO Pump	N/A

### T4F Engine

Engine Type and Power Rating	CAT 4.4 - 82kW (110hp)
RPM	1800rpm
Crankshaft Pump	Triple pump 38/38/8
PTO Pump	N/A

### Stage V Engine

Engine Type and Power Rating	CAT 3.6 - 82kW (110hp)
RPM	1800rpm
Crankshaft Pump	Triple pump 38/38/8
PTO Pump	N/A

# TF-75H

## HIGH LEVEL FEEDER

### GENERAL MACHINE FEATURES

Pinless Deployment

Discharge Head Drum Bearing Automatic Greasing Cartridge

External Conveyor Belt Adjustment

Engine Prestart Delay & Siren

Emergency Stops x 3

### OPTIONAL EXTRAS

HYBRID Configuration

6mm Mild steel liners bolted into hopper (Configurable at point of order)

6mm AR400 steel wear liners in hopper (Configurable at point of order)

Feedboot Lined with 6mm AR400 Wearplate (Configurable at Point of Order)

14ft Tipping Grid option 4" Grid Cassette

14ft Tipping Grid option 6" Grid Cassette

Integrated Fall break system bolted into hopper

12ft 2-Deck vibrating grid c/w radio control tipping before grid 100mm (4") top deck and 38 mm (1 1/2") bottom deck mesh

Hopper upgraded to 500mm (20") extension 9m<sup>3</sup> (12yds<sup>3</sup>) C/W Integrated Fall Break System bolted into Hopper.

Hopper upgraded to 700mm (28") extension 12m<sup>3</sup> (15yds<sup>3</sup>) C/W Integrated Fall Break System bolted into Hopper.

Machine prepared hydraulically to tip a standard grid. Includes Remote Control. NO GRID

Machine prepared hydraulically for DDVG option. Includes Remote Control. NO Vibrating Grid

Double Deck Vibrating Grid 4" /100mm Spacing on top deck: (please advise bottom deck mesh Aperture)

Twin Hydraulic Drive Feed Conveyor

Twin Hydraulic Drive Discharge Conveyor (Recommended to also select Ceramic Drive Drum Option)

Discharge Conveyor Drive Drum upgraded to Ceramic Lagging (Recommended if Twin Drive Option Selected)

Feed Conveyor Drive Drum Upgraded to Ceramic Lagging

Anti-Roll Back Flaps

Conveyor Fitted With Chevron Belt EP315/3 Ply x 3+1.5 Covers

Conveyor Fitted With Heavy Duty Plain Belt EP500 4 Ply x 8+2 Covers

High Spec Scraper Discharge Conveyor at Head Drum (only with Plain Belt)

Discharge Conveyor Underguard Length of Mid-Section

Pull Cord E-Stop Running Length Of Conveyor

Dust Hood

Canvas Dust Covers complete with Dust Hood on Discharge

### FEATURES

Kick out sensor stops feeder if discharge belt becoming over run with material

Hydraulic Discharge Height Adjustment

Hydraulic Fold Over For Transport

Rosta Scraper At Head Drum

### BENEFITS

Can Accept loads from Excavator, Wheel loader, Crusher or Screener

Reduces wear and tear on loaders by lower feed in height

"Eliminates the need for double handling of material, reducing labour and maintenance costs"

Stockpiling capacity of 100-600TPH+

"Variable speed belt feeder to ensure regulated and consistent transfer of material from hopper to discharge conveyor, ideal for blending applications."

"Improved material quality reduced compaction, degradation, segregation and contamination"

"Various hopper options and capacities depending on operators loading method or application."

Rapid set up time and manoeuvrability around site

### 1 HOPPER/FEEDER

Capacity: 7m<sup>3</sup> (9.15yd<sup>3</sup>)  
 Grid Opening 4750mm (15' 7") x 2150mm (7' 1")  
 Target Area (without Grid) 4100mm (13' 5") x 1633mm (5' 5")  
 Grid Aperture 4" (108mm)

### 2 UNDERCARRIAGE

Undercarriage with heavy duty tracks.  
 4300mm centres, 400mm shoe

### 3 HYBRID TECHNOLOGY

The machine is available with hybrid technology consisting of on-board electrical motors permitting the flexibility to run the plant from an outside power supply or standard on-board engine.

### 4 SAFETY FEATURES

Inbuilt safety measures engineered into the machine include pinless deployment of the main conveyor.

### 5 DISCHARGE CONVEYOR

Conveyor Length: 22.5m (73' 10")  
 Belt Width: 1.2m (48")  
 Max. discharge height: 9.8m (32' 2")  
 Hydraulic discharge height adjustment  
 Hydraulic fold over for transport



### T-LINK TELEMATICS

T-Link telematics hardware and software along with free seven year data subscription are fitted and installed as standard.



REDUCED COST



SITE OPERATING EFFICIENCY



ENVIRONMENTAL CONSIDERATIONS



IMPROVE HEALTH & SAFETY



PRODUCT QUALITY

# TF-75H

## HIGH LEVEL FEEDER

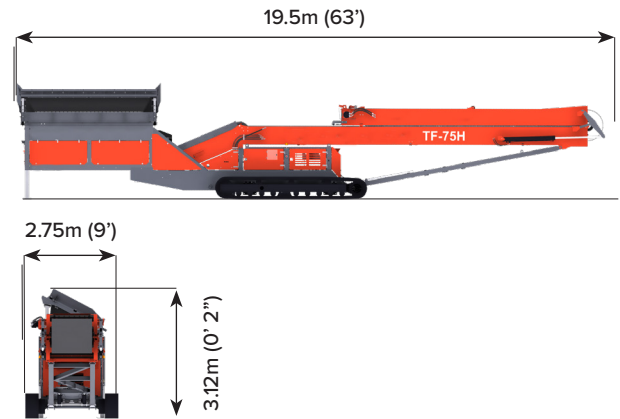
### TRANSPORT DIMENSIONS

Length	19.5m (63')
Width	2.75m (9')
Height	3.12m (10' 2")

### WORKING DIMENSIONS @24°

Length	25.5m (83' 7")
Width	2.75m (9')
Height	10.5m (34' 6")

### TRANSPORT DIMENSIONS



### WORKING DIMENSION



**MACHINE WEIGHT:** 23,500kg (51,809lbs)



The material in this document is for information only and is subject to change without notice.

Finlay® assumes no liability resulting from errors or omissions in this document, or from the use of the information contained herein.

Due to continual product development we reserve the right to change specifications without notice. Product performance figures given in this brochure are for guidance purposes only, this information does not constitute an expressed or implied warranty or guarantee, but shows test examples. These results will vary depending on application. Photographs are for illustrative purposes only; some or all of the machines in the illustrations may be fitted with optional extras. Please check with your Dealer for details on optional extras.

Published and Printed in 2023